

Plate I. Photomicrographs of H.E. stained cross-sections through gonads in different stages of development; A, from a juvenile; B, from a male; C, from a female gonad; D, through the XA tube of an aberrant specimen (for abbreviations see page 203).

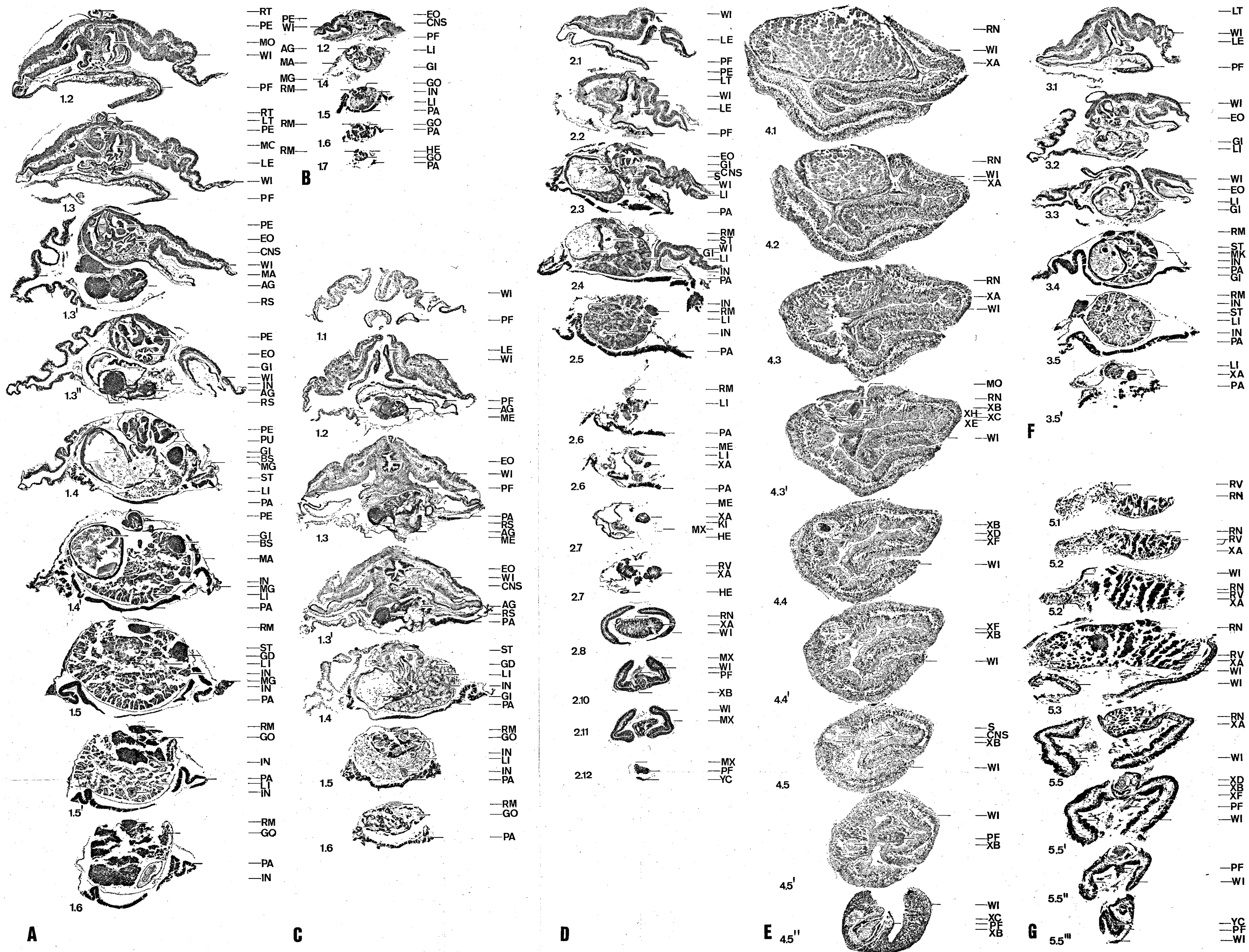
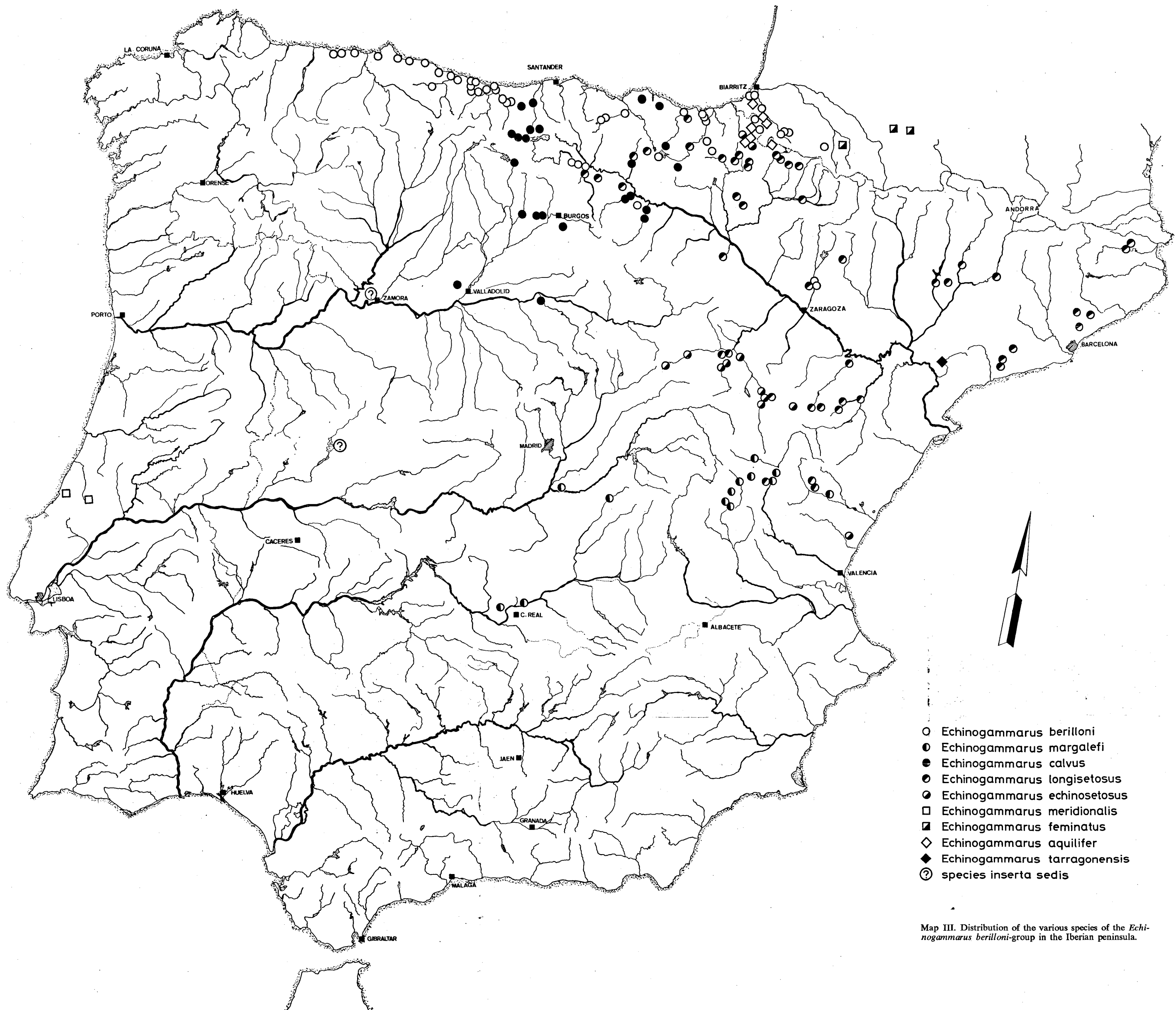


Plate II. Photomicrographs of histological sections stained with H.E., 5 μ thick, mounted from top to bottom in the sequence from anterior to posterior; A, series from a male; B, series from a juvenile; C, series from a female; D, series from a specimen showing strobilation; E, series through an aberrant; F, series through a specimen after

strobilation; G, series through an aberrant in its first phase of development (for abbreviations see page 203; the numerals indicating the planes of section correlate with those given in fig. 2, when apostrophes are added to the numerals, the plane of section was somewhat posterior to that of the actual figure).



Map III. Distribution of the various species of the *Echinogammarus berilloni*-group in the Iberian peninsula.