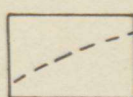
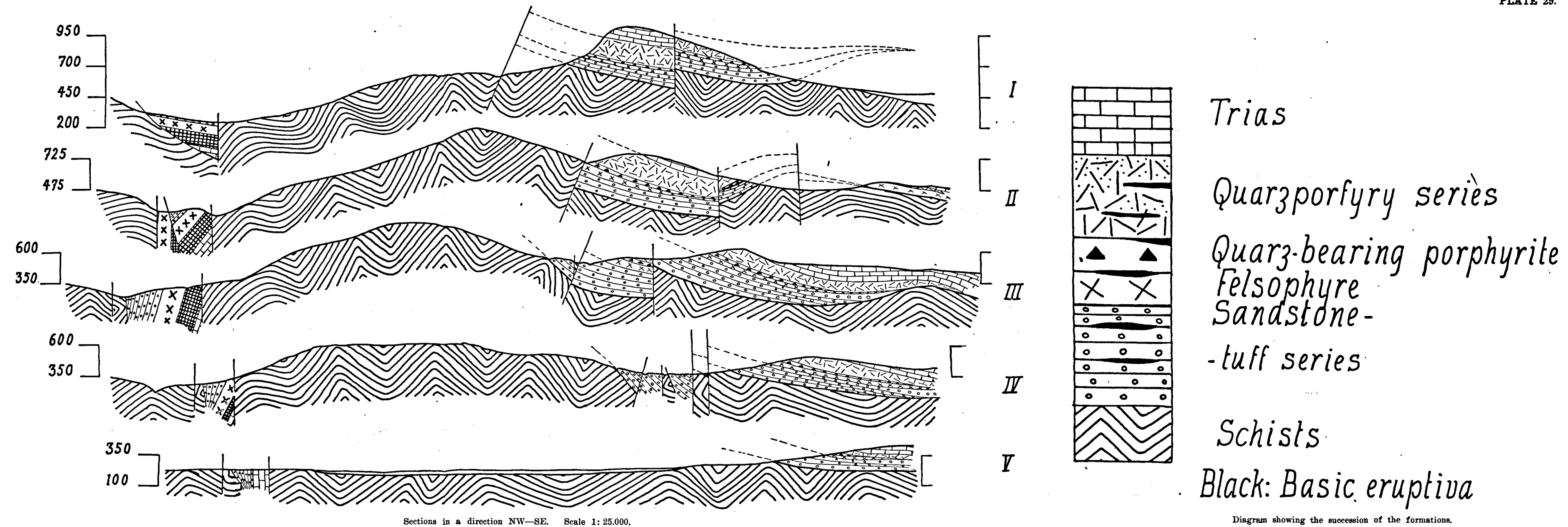


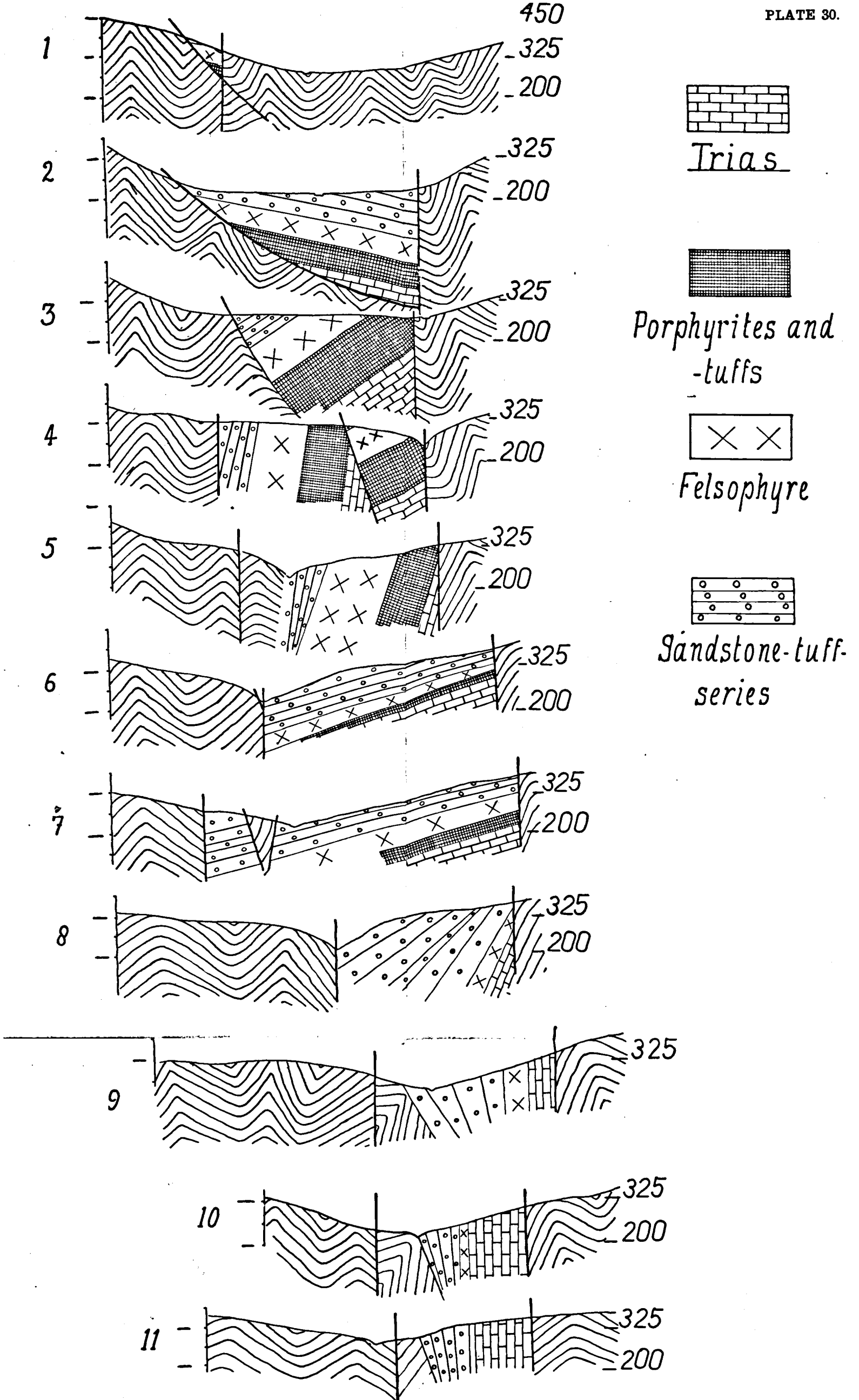
Triadic  
dolomite



geological  
boundaries







Sections in a direction N—S. through the complex of Permian and Triadic rocks in the Tresa valley.

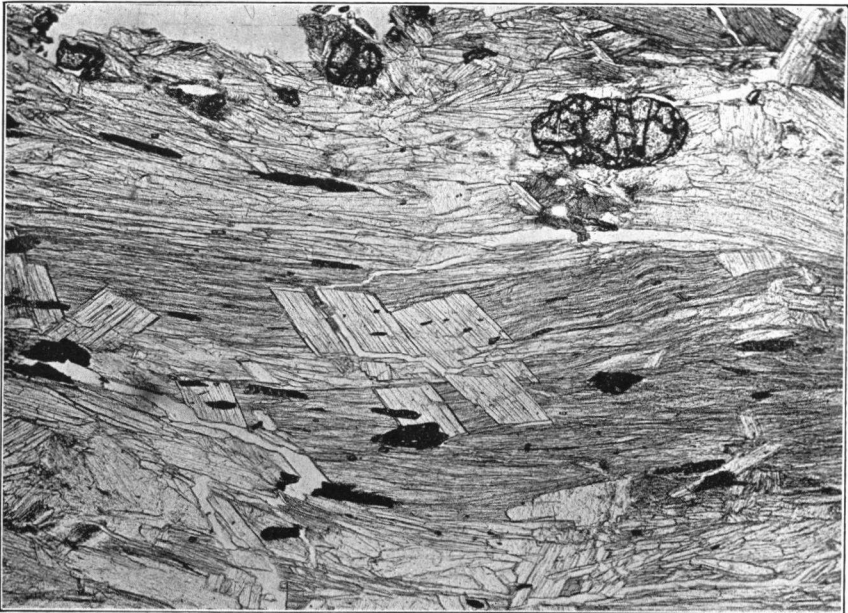
Height in meters. Scale 1:12,500.

PLATE 31a.



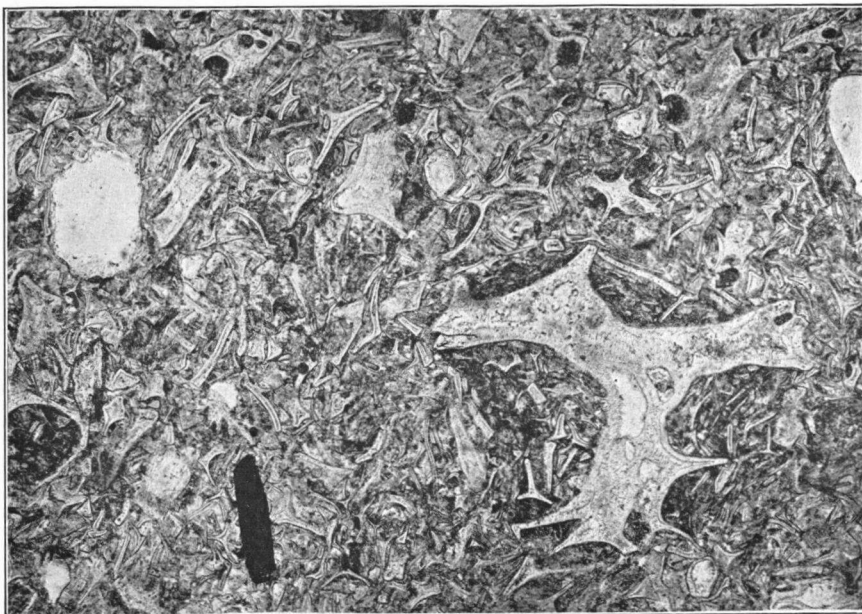
Meso-Garnet-Muscovite-gneiss. Garnet with inner relict structure.  
Recrystallization of muscovite visible in the upper half of the photograph.  
Ordinary light. 25  $\times$ .

PLATE 31b.



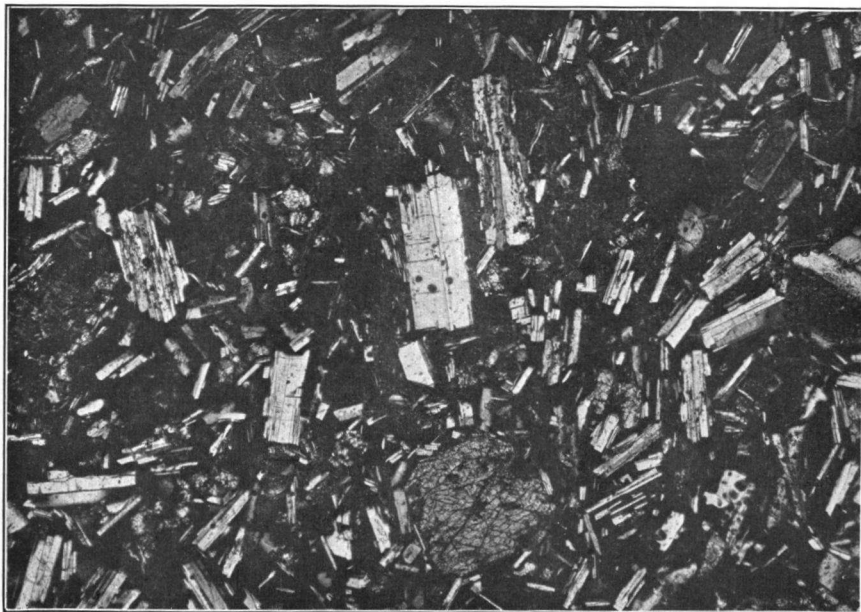
Meso-Garnet-Muscovite-gneiss. Recrystallization of muscovite. Note the position  
of the elongated magnetite-crystals within the recrystallized mica.  
Garnet in the upper right hand corner.  
Ordinary light. 50  $\times$ .

PLATE 32a.



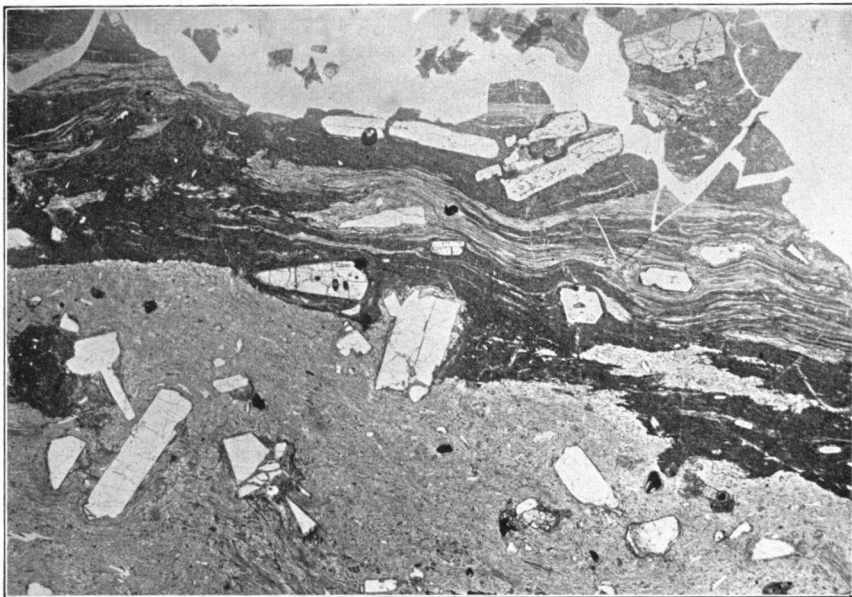
Vitric tuff. Pebble in the red tuffs.  
Ordinary light. 50  $\times$ .

PLATE 32b.



Enstatite-basaltite. Plagioclase and enstatite in groundmass of glass.  
Nicols +. 50  $\times$ .

PLATE 33a.



Vitrophyre. Showing dark coloured inclusion derived from the surface of the flow. In the upper right hand corner and in the middle, somewhat to the left, crystals of orthorhombic pyroxene.

Near the left border: pseudomorph after olivine. Further plagioclase.  
Ordinary light. 20 X.

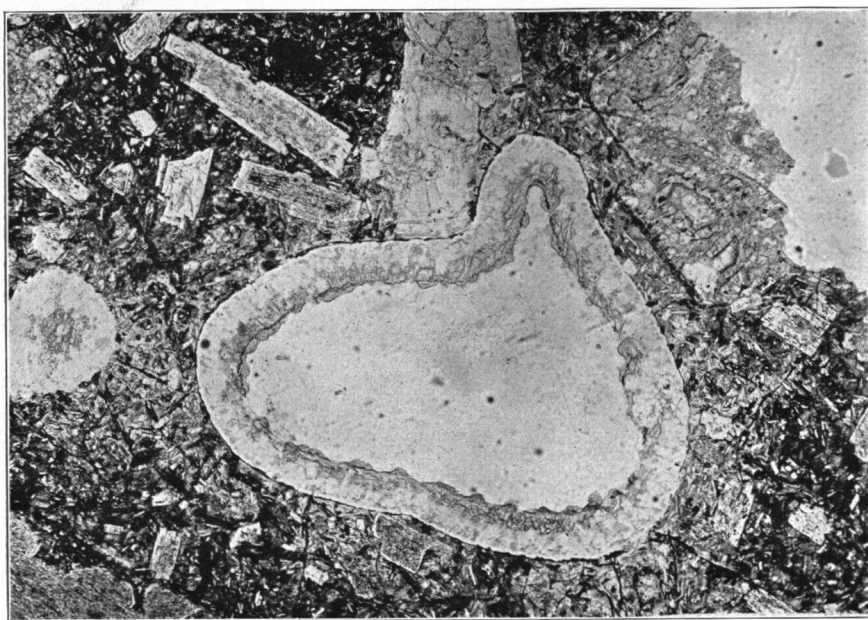
PLATE 33b.



Vitrophyre. Well developed fluxion structure. Phenocrysts of plagioclase and partly altered olivine.  
Ordinary light. 50 X.

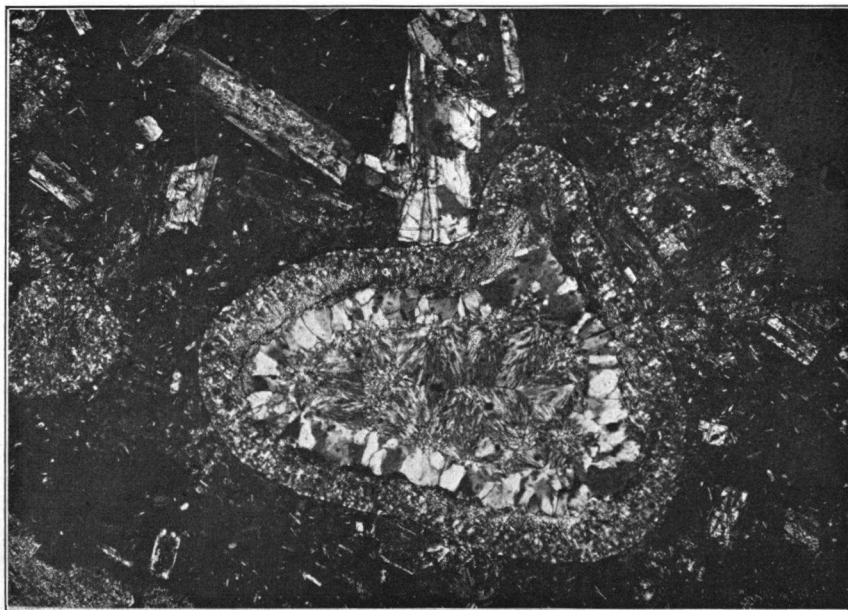


PLATE 34a.



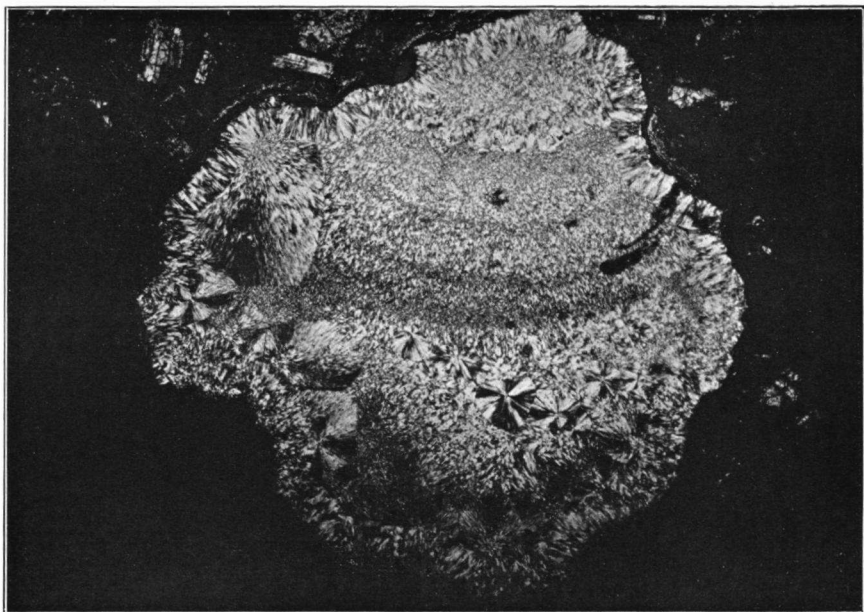
Amygdaloidal Augite-porphyrite. Tresa Valley. Amygdale filled with  
 1<sup>o</sup>. a coat of chalcedony and chlorite; 2<sup>o</sup>. a layer of calcite.  
 3<sup>o</sup>. quartz.  
 Ordinary light. 30 X.

PLATE 34b.



Amygdaloidal Augite-porphyrite. The same of 34a, nicols +.  
 The quartz mentioned sub 3<sup>o</sup>. appears to consist of *a*: a layer or quartz-grains.  
*b*: spherulites of chalcedony.

PLATE 35a.



Amygdaloidal Augite-porphyrite. Tresa-Valley. Amygdale filled with chalcedony. The photograph was taken at the border of the section,  
Nicols +. 25 X.