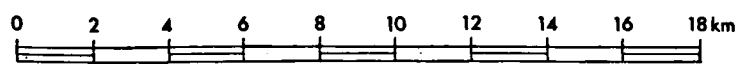


# HYDROCHEMICAL MAP OF THE UPPER PART OF THE AQUIFER

scale 1:200,000



- Town
- Village
- Areas where Holocene clay and peat deposits are absent
- Section
- International boundary

## LEGEND

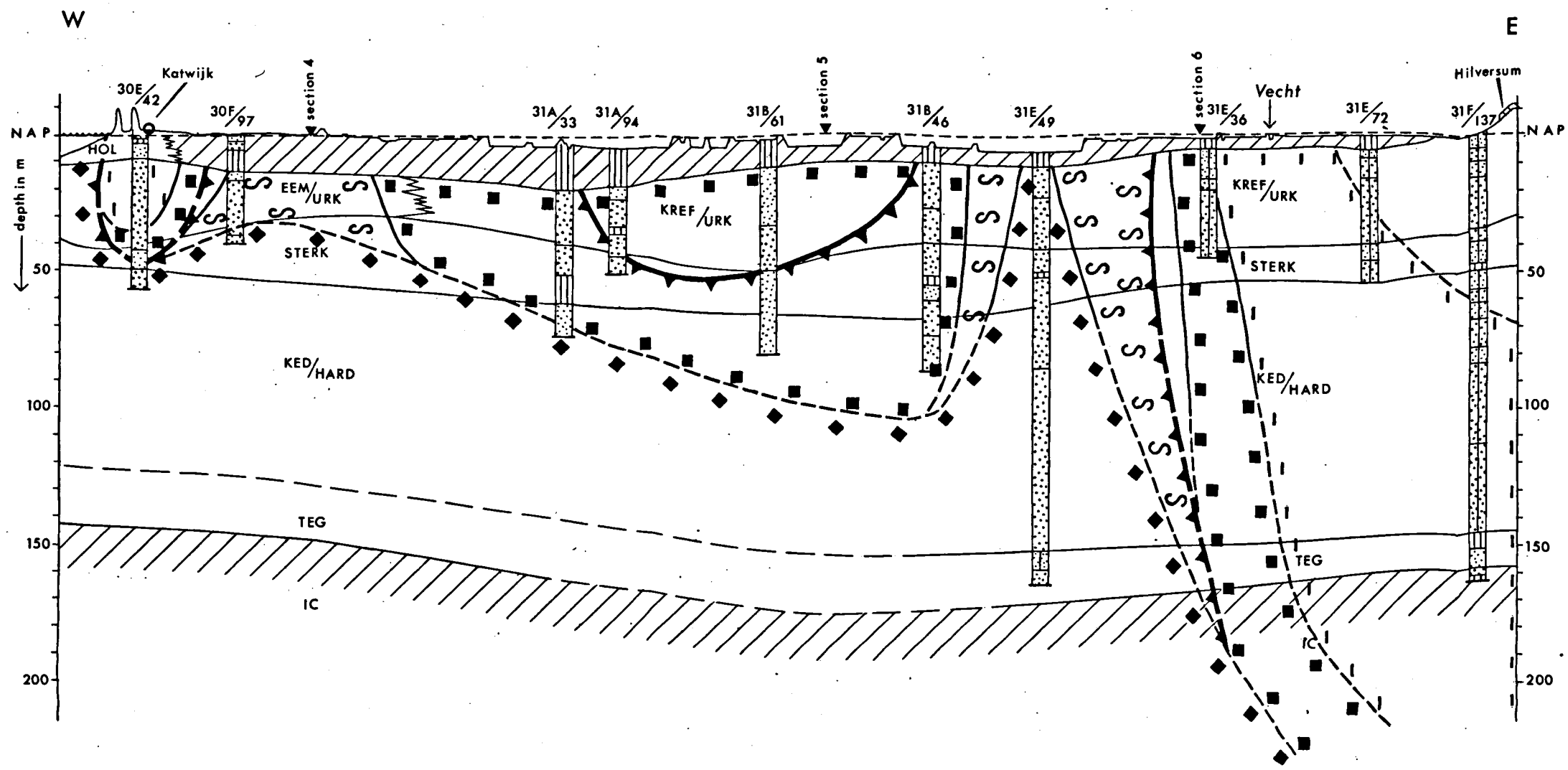
- SECTIONS**
- Towns and villages
  - Holocene clay and peat deposits
  - marine Plio- Pleistocene deposits
  - Fault
  - Number of bore-hole
  - Coarse- and medium- grained sand (>180μ)
  - Fine sand
  - Silty sand
  - Clay and loam
  - imbricated structures

- Abbreviations**
- HOL Holocene sandy deposits
  - EEM Eemian deposits
  - KREF Kreftenheye Formation
  - VEG Veghel Formation
  - DRENTE Drente Formation
  - DIL Sand Diluvium
  - URK Urk Formation
  - STERK Sterksel Formation
  - KED Kedichem Formation
  - HARD Harderwijk Formation
  - TEG Tegelen Formation
  - FLUV. PLEIST fluvial Pleistocene undiffer.
  - FLUV. PLIO- PLEIST fluvial Plio- Pleistocene
  - IC marine Pleistocene ("Icenian")
  - MT marine Tertiary

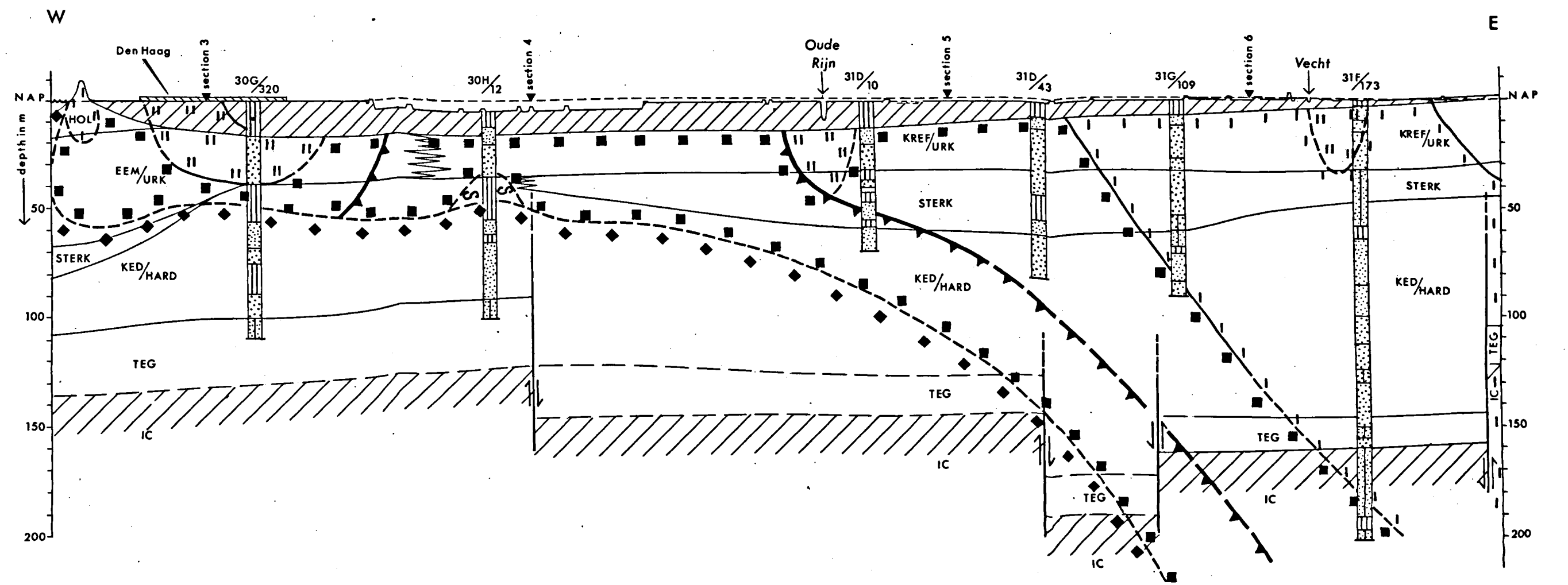
- MAP AND SECTIONS**
- Fresh / salt water boundary
  - Infiltration water
  - Polluted infiltration water
  - Ca(HCO<sub>3</sub>)<sub>2</sub> water
  - Polluted Ca(HCO<sub>3</sub>)<sub>2</sub> water
  - NaCl water
  - NaHCO<sub>3</sub> water
  - CaCl<sub>2</sub> water
  - Mixed water

Horizontal scale of all sections 1:200,000

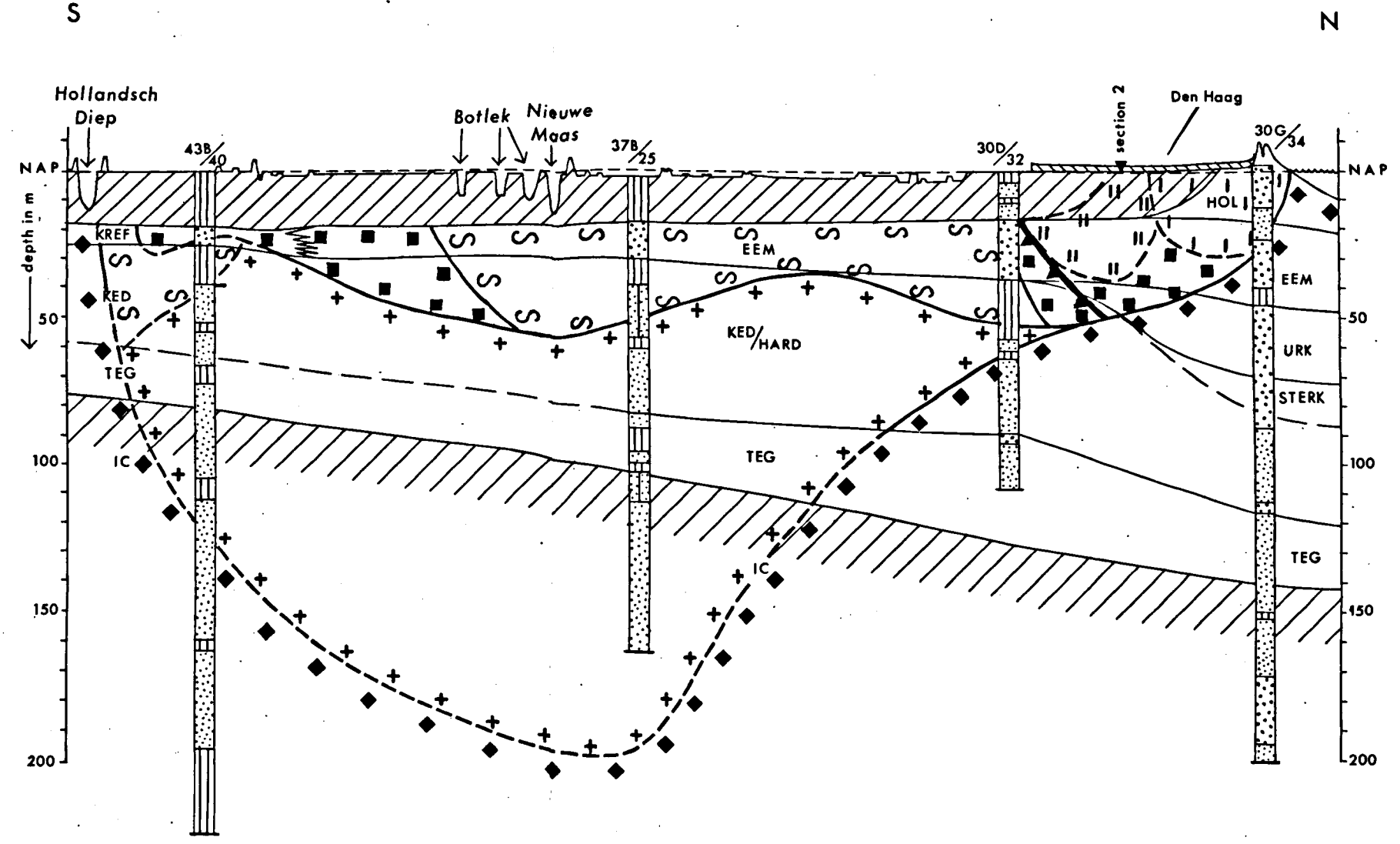
SECTION 1



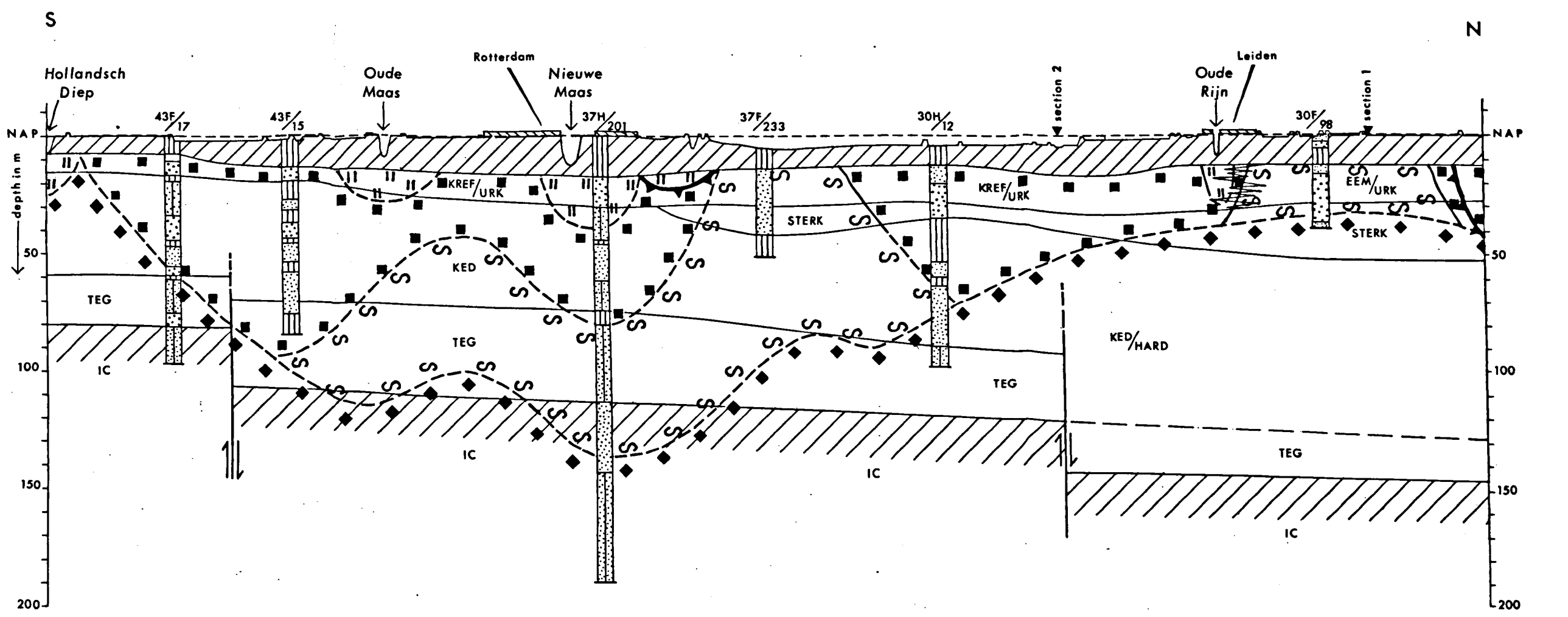
SECTION 2



SECTION 3

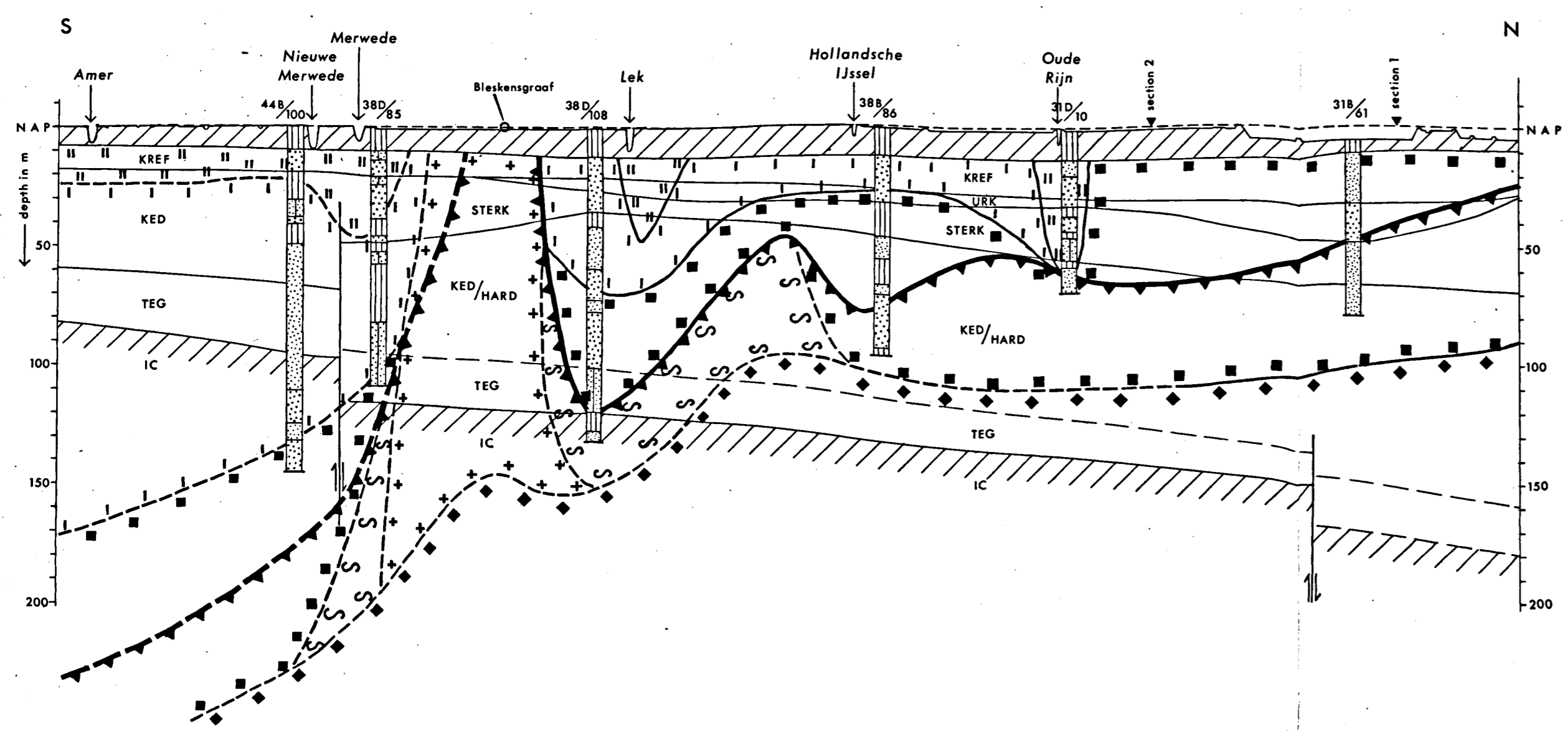


SECTION 4

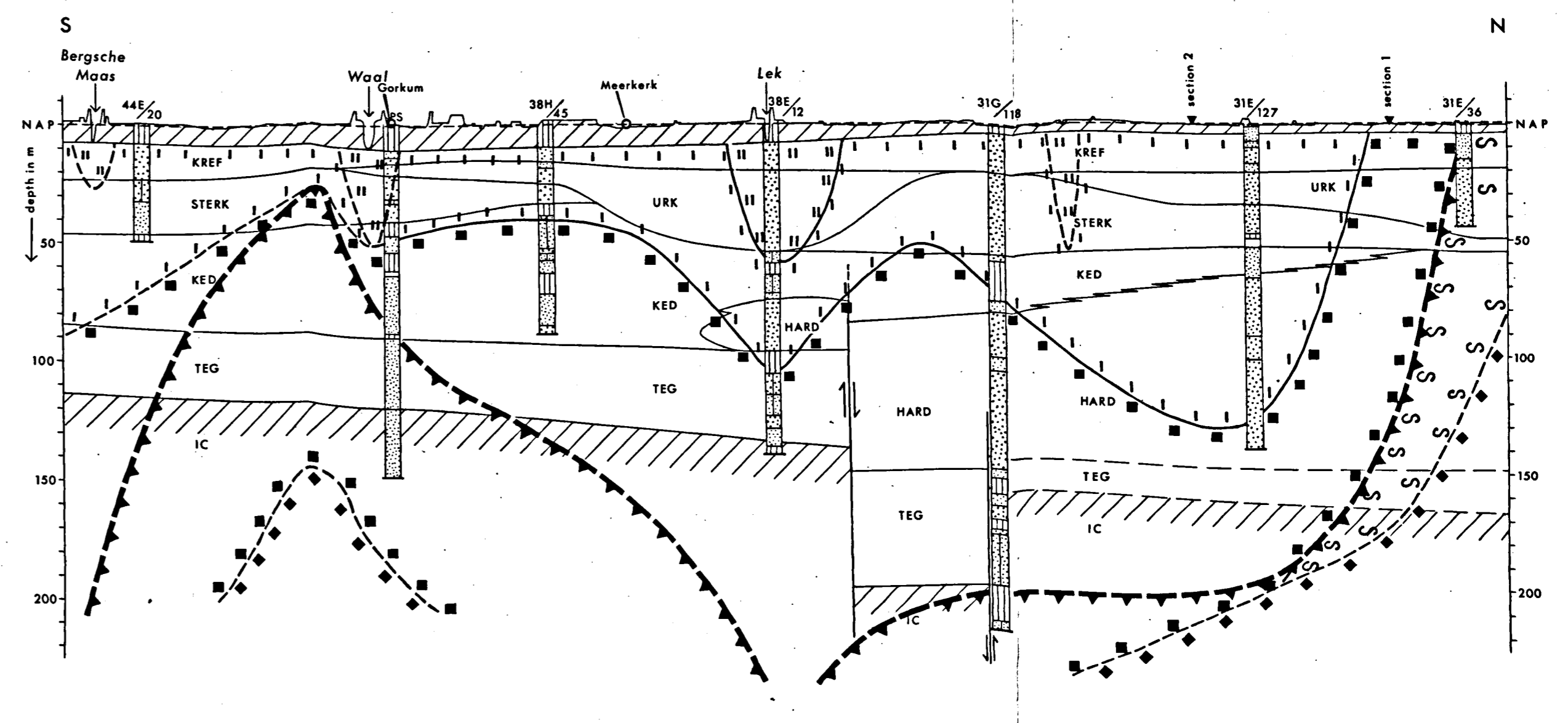


Horizontal scale of all sections 1:200,000

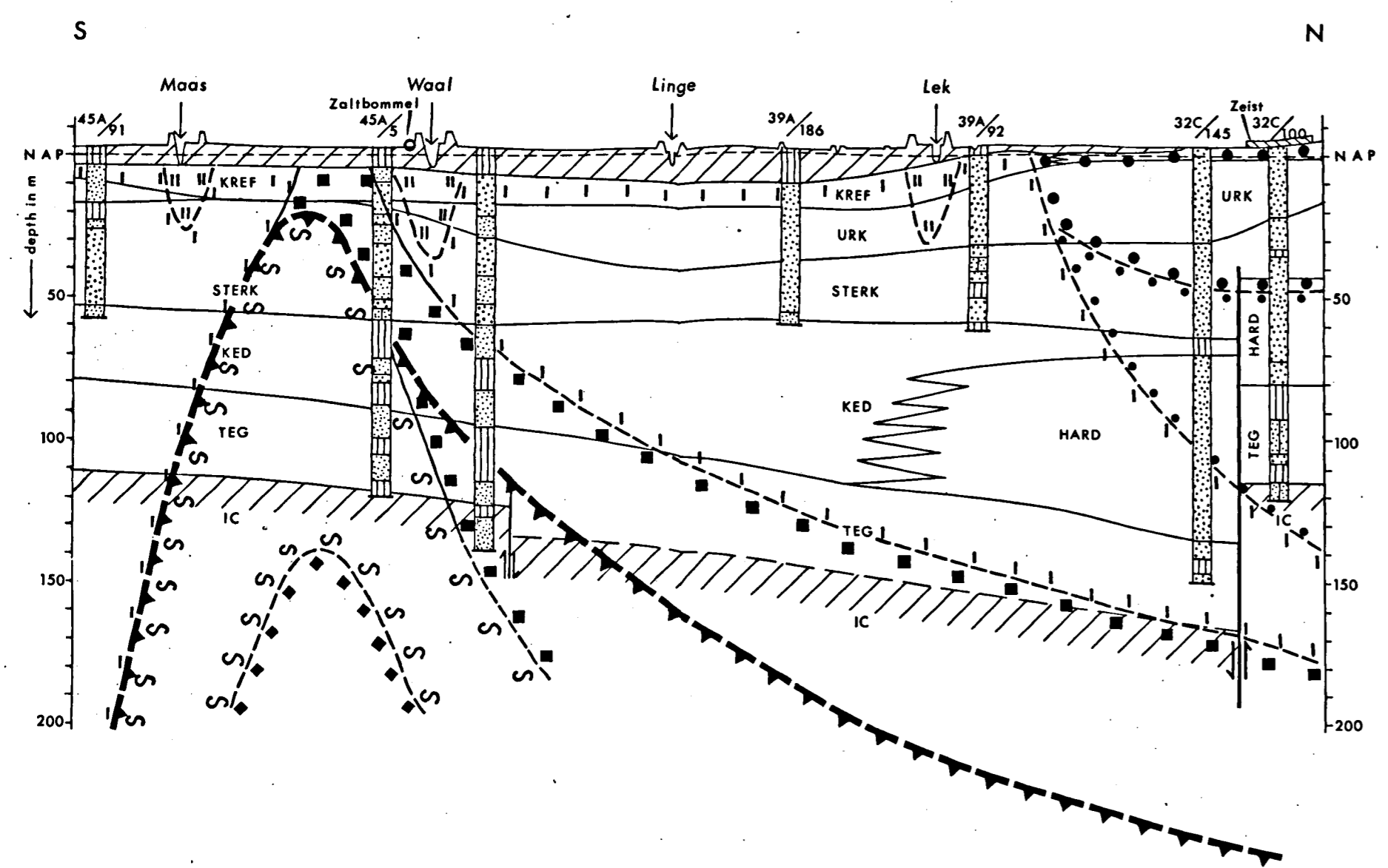
SECTION 5



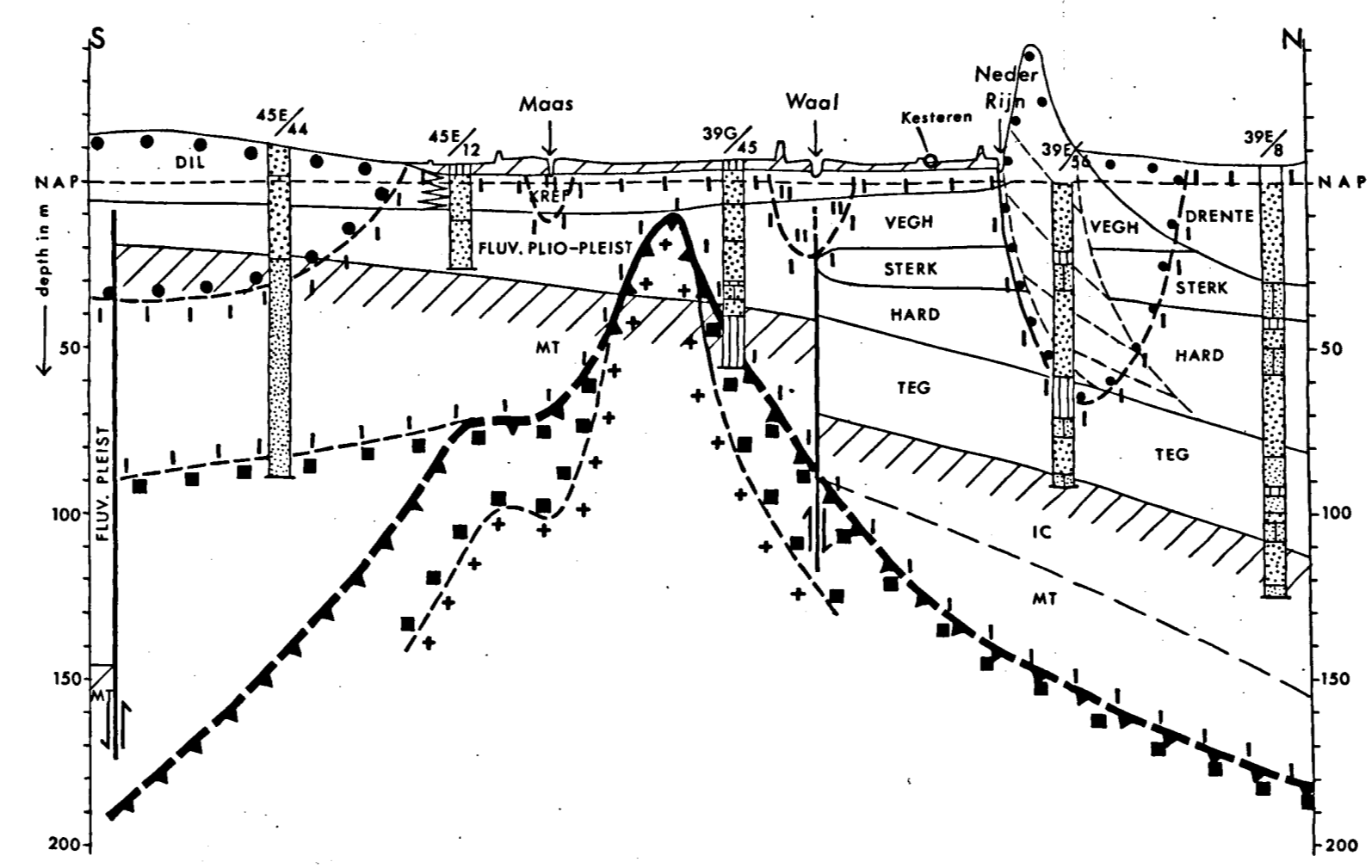
SECTION 6



SECTION 7



SECTION 8



SECTION 9

