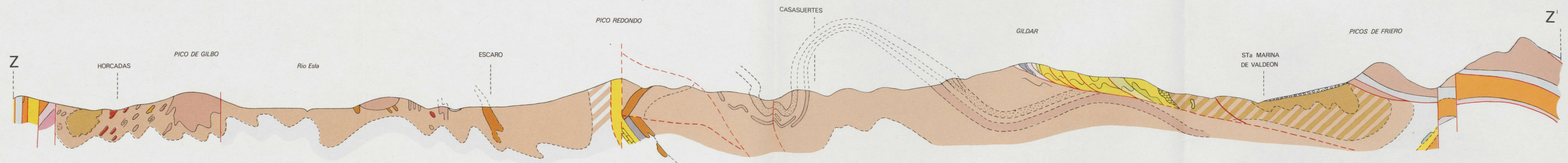
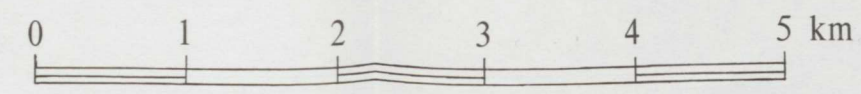




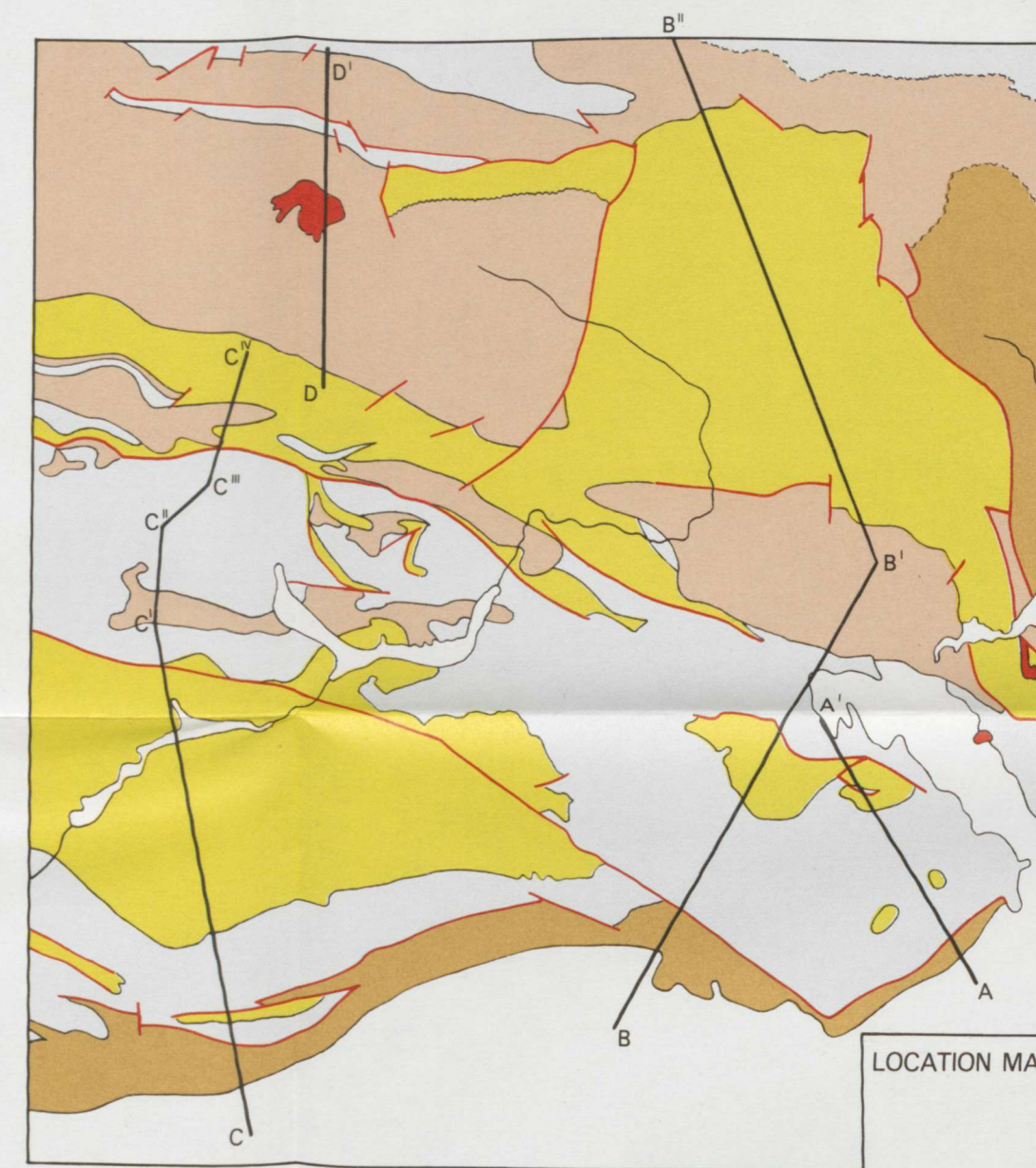
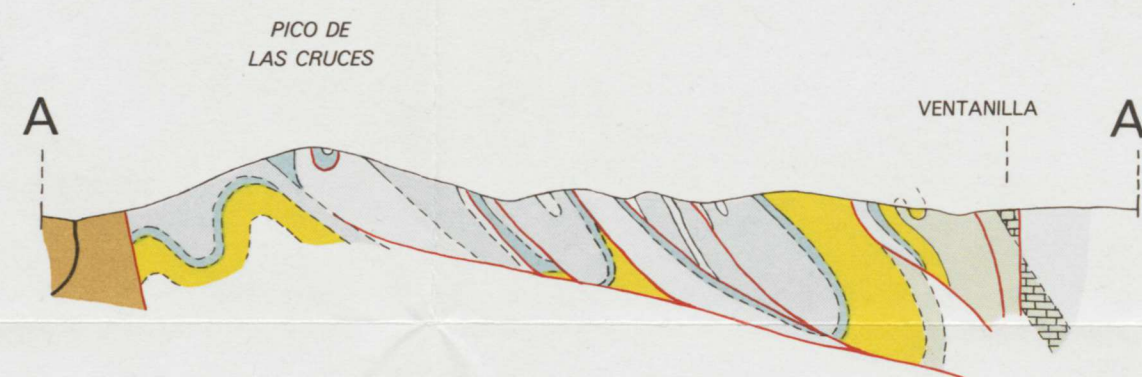


# GEOLOGICAL CROSS - SECTIONS

Horizontal and Vertical Scale 1 : 50.000

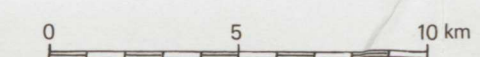


## SHEET CARRION

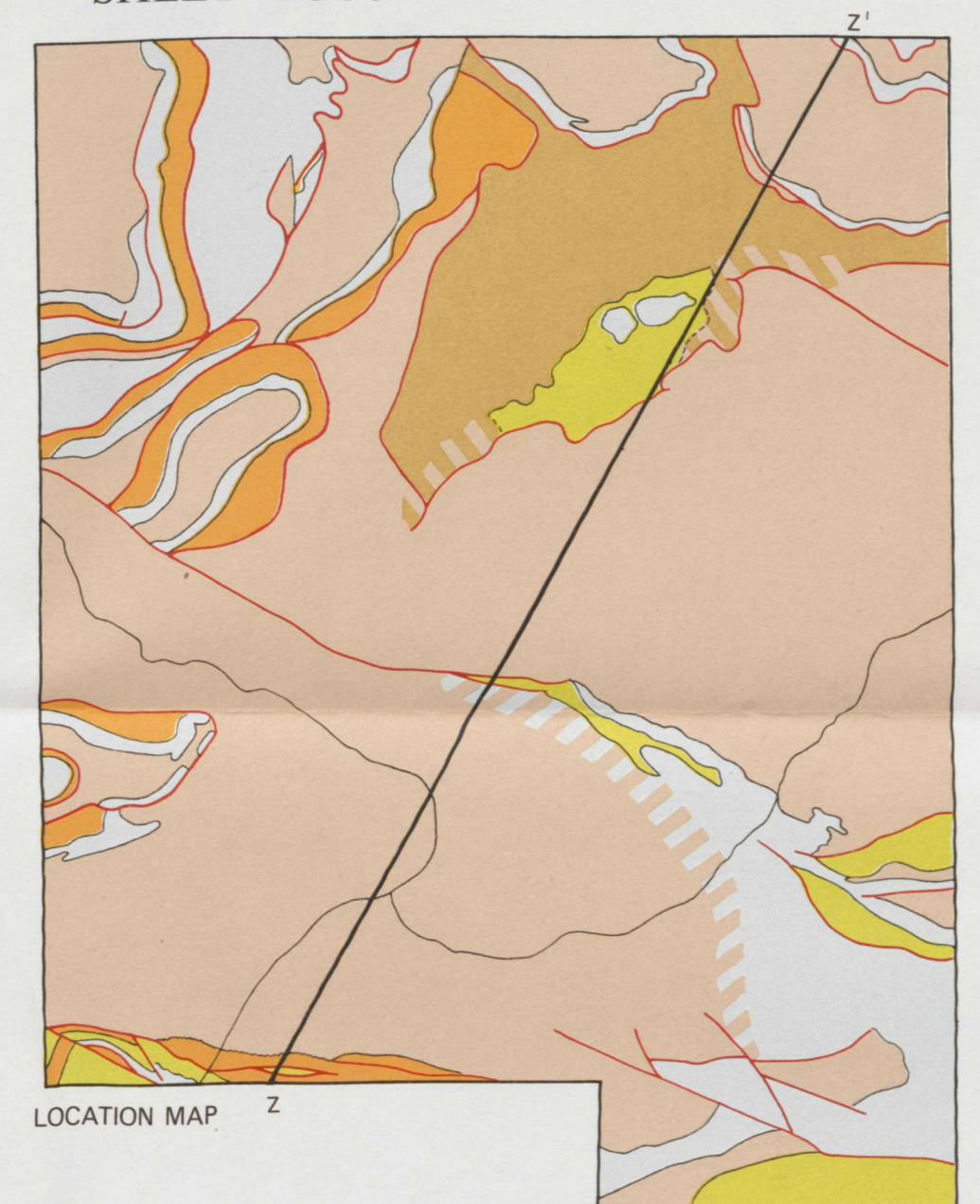


Simplified colour scheme used in Location Maps

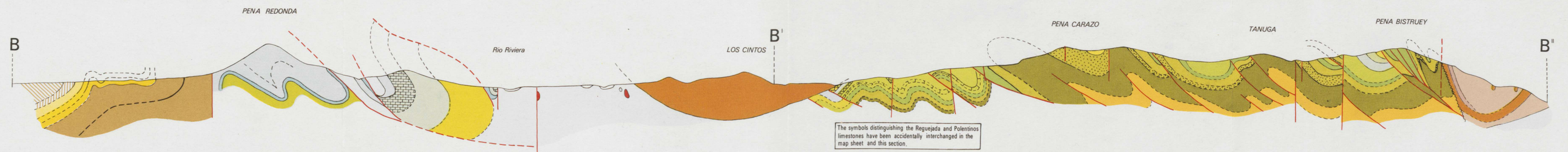
- Recent, Mesozoic and Tertiary
- Stephanian
- Westphalian
- Namurian
- Devonian / Silurian
- Cambro-Ordovician
- Intrusives



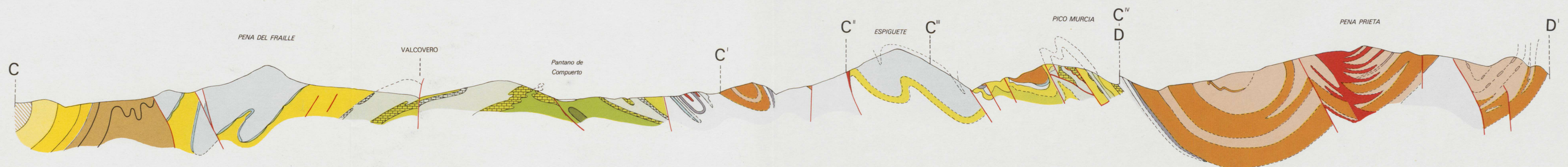
## SHEET YUSO



LOCATION MAP



The symbols distinguishing the Reguejada and Potentinos limestones have been accidentally interchanged in the map sheet and this section.





GEOLOGICAL MAP  
of the  
SOUTHERN CANTABRIAN MOUNTAINS,  
SPAIN  
SHEET CARRION 1977

Prepared by: J.F. Savage  
from the work of the Geological Institute, Leiden

Published by the Geological Institute, Leiden University  
Editors: D. Boschma and J.F. Savage

Scale 1:50,000

0 1 2 3 4 5 km

QUATERNARY		Alluvium Moraine material Scree Terraces	
TERTIARY			
MESOZOIC	Santonian to Maestrichtian incl. Cenomanian to Conianian incl. Wealden	cong. (incl. quartz) st. mass form. st. clay st. cong. clay sand	
CARBONIFEROUS	Stephanian	st. st. cong. st.	Guardo formation Barruelo formation
	Westphalian	st. st. cong. st.	Lechada formation Curavacas formation
	Namurian	st. st. cong. st.	Piedras Luernas Limestone Trodillo Limestone Conglomerate Mbr.
	Visean	st.	Caliza de Montana formation
	Tournaisian	st. (thin)	Alba formation Vegamian formation
DEVONIAN	Famennian	st. (thin) st. (thin) st.	Vidrieros formation Murcia formation Camporredondo formation (Cr)
	Frasnian	st. (thin) st. (thin) st.	Cardano fm. (Ca) Valcovero fm. (V) Riviera fm. (R)
	Givetian	st. (thin) st. (thin) st.	Gustalapedra fm. (G) Hornalejo fm. (H) San Martin fm. (S)
	Eifelian	st. st. st.	Polentinos Abadia fm. (A) Otero fm. (O) Ventanilla fm. (Vi)
	Emisian	st. (thin) st. (thin) st.	Lebanza formation (L) Compuerto formation (Co)
SILURIAN	Siegnian	st. (thin) st. (thin) st.	Carazo formation
	Gedinnian	st. (thin) st. (thin) st.	Las Arroyacas
	Ludlovian	st. (thin) st. (thin) st.	Robledo formation
	Wenlockian	st. (thin) st. (thin) st.	
	Llandoveryan	st. (thin) st. (thin) st.	
			Intrusives

