

NOTE IV.

OBSERVATIONS ON SOME SPECIES OF THE
GENUS LYRAMORPHA WESTW.

(Hemiptera Heteroptera)

BY

Dr. H. SCHOUTEDEN.

(With 2 figures).

1. *Lyramorpha pallida* Westwood and *L. rosea* Westwood.

In his »Catalogue of Hemiptera in the Collection of the Rev. W. F. Hope", part I, London 1837, Westwood founded the genus *Lyramorpha*, with two species, *L. rosea* and *L. pallida*, both from New Holland.

The descriptions of these species are as follows:

L. rosea Hope [= Westwood]. — Supra cum pedibus et antennis rosea, marginibus thoracis et hemelytrorum æneis, thoracis margine antico pallido; corpore subtus virescenti luteo. — Long. Corp. Lin. 11.

L. pallida Hope [= Westwood]. — Griseo lutescens, thorace et hemelytrorum corio interdum virescenti tincto margine tenui roseo, hujus apicibus puncto sublaterali albo; corpore subtus cum pedibus et antennis pallidis. — Long. Corp. Lin. $10\frac{1}{2}$.

From the diagnosis of the genus is to be seen that the antennæ are four-jointed.

These specific descriptions, although very concise, appear to represent two distinct species. Now, in the »Enumeratio Hemipterorum", part I, published in 1870, Stål mentions *L. pallida* only as a synonym of *L. rosea*; it does not

appear, however, that he has seen the types, nor does he mention the species as present in the Stockholm Museum or in Signoret's collection.

From this time this synonymy was thoroughly admitted, so in the Lethierry and Severin Catalogue.

In 1900 Distant examined the types of Westwood's descriptions in the Hope Catalogue and enumerated the species in their proper systematic position. We find in his list *L. pallida* indicated, as Stål did, as a synonym of *L. rosea* ¹⁾.

In 1900 Horvath published a valuable monograph of the genus *Lyramorpha* ²⁾, and as he did not see the types of Westwood, he admitted also the synonymy given by Stål and by Distant. Thus he describes only one species with four-jointed antennæ, viz. *L. rosea*, with *L. pallida* quoted as a synonym.

Looking through, last year, the Pentatomidæ in the collection of the Leyden Museum, I found there, to my great surprise, a specimen of both *L. rosea* and *L. pallida*, marked by the late Snellen van Vollenhoven, as having been received from Westwood himself.

At first sight the species looked different, and as the specimens were, fortunately enough, both of the male sex, an examination of the genital segment proved they were quite distinct!

The specimens in the Leyden Museum agree very good with the descriptions reproduced here above, and I consider them to be types, or, if preferred so, cotypes of Westwood.

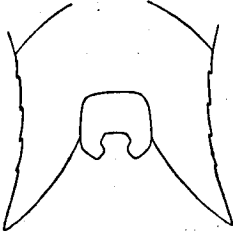
The antennæ of both specimens are partially broken off, but they were certainly, as expressly mentioned by Westwood, four-jointed. Thus there are two species to be included in the genus *Lyramorpha* s. str., which can

1) Proc. Zool. Soc. London for the year 1900, p. 923.

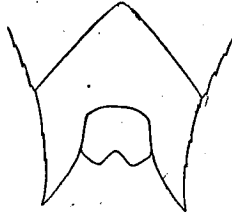
2) Természetrajzi Füzetek, Vol. XXIII, p. 341.

easily be separated by the following characters, noted by me in Leyden :

L. rosea: Limbo costali corii olivaceo (»æneo" teste Westwood). Corio apice extus concolore, haud pallido-maculato. Pronoto rugoso-punctato. Segmento genitali maris profunde inciso, incisura fundo plano, lateribus curvatis (fig. 1).



1. *L. rosea* Westw.



2. *L. pallida* Westw.

L. pallida: Limbo costali corii roseo. Corio apice extus macula distinctissima pallida ornato (semper?). Segmento genitali maris minus profunde inciso, incisura angulari (fig. 2).

These characters show sufficiently that the species must be treated as distinct. Horvath, when he wrote his monograph, had certainly before him *L. pallida* only, as is shown by the figure of the ♂ segment he reproduces. His *L. rosea* must thus be regarded as a synonym of *L. pallida* of Westwood. The true *L. rosea* Westw. was unknown to him.

The figures I add here, were kindly drawn for me after the Leyden-specimens by Dr. van der Weele. They clearly represent the striking difference of the apical segment in the ♂ of both species.

2. *Lyramorpha Vollenhovii* Stål and Vollenhoven.

In his »Essai d'une Faune entomologique de l'Archipel Indo-néerlandais", third monograph, the Hague 1868, van Vollenhoven describes (pp. 35 and 36) and figures (Pl. IV, fig. 3) a *Lyramorpha*, which he identifies with Stål's *L. Vollenhovii* [Tijdschr. v. Entom. (2) II, p. 124 (1867)].

Notes from the Leyden Museum, Vol. XXX.

As habitat he gives: »Halmaheira septentrionalis, Morotai, Waigeou, Nova Guinea et Aru”.

At the end of the description, where he mentions the maculate character of the elytra, van Vollenhoven writes: »L'individu de la Nouvelle Guinée et celui d'Aru ne portent point de marques ni de taches sur les élytres”.

On the plate are given a coloured drawing of the insect (fig. 3) and figures of the ♂ and ♀ genital segments (fig. 3 ♂, 3a ♂ and 3 ♀), but these latter belong to two quite different species.

Fig. 3a ♂ evidently was made after the specimen represented as fig. 3; figs. 3 ♂ and 3 ♀ refer to another species.

In his *Lyramorpha*-monograph Horvath pointed out that only the last figures: 3 ♂ and 3 ♀ belong to the true *L. Vollenhovii* Stål. Figs. 3 and 3a ♂ are quoted by him under his new *L. ambigua*, of which the only specimens the exact locality of which was known to him, came from the island Salawatti.

As *L. Vollenhovii* is the only species with maculate corium, it is evident that figs. 3 and 3a ♂ were made after the specimens alluded to from New Guinea and Aru.

These specimens are still in the Leyden Museum and I could examine them. Both are males and their genital segments are different.

The specimen from Aru has the genital segment much like that figured by Horvath for *L. parens* Bredd., more deeply emarginate than is the case in *L. ambigua*; the apical spines of the last abdominal segment agree also.

The specimen from New Guinea has the genital segment resembling Horvath's drawing of *L. ambigua*; but the spines of the sixth segment are acute, more produced and evidently surpassing the apex of the genital segment.

Neither of them quite agrees with van Vollenhoven's figures, but I think it most probable that the represented specimen is the one from New Guinea, the differences being within the limits of errors we frequently met with in the »Essai«.

Notwithstanding the different development of the spines I think this specimen can be referred, as Horvath did with regard to the figures, to *L. ambigua*. I find not unfrequently that there is some variation in the length of these spines, even in *Lyramorpha*.

New Guinea (evidently the Dutch territory) can thus be added to the known habitats of *L. ambigua* Horv.

Brussels, March 6, 1908.