

A NEW OBERONIA (ORCHIDACEAE) FROM KERALA, INDIA

V.J. NAIR, V.S. RAMACHANDRAN & R. ANSARI

Botanical Survey of India, Coimbatore-641 003, India

*Oberonia chandrasekharanii* V.J. Nair, V.S. Ramachandran et R. Ansari, *sp. nov.*

*Oberonia sebastiana* Shetty et Vivek. affinis, sed marginibus bractearum fimbriatis; apicibus petalorum truncatis et dentatis; labio reniformi et pubescenti; disco prominenti et ovato; lobis lateralibus auriformibus, longioribus quam latis; lobulis lobum medianum orbiculatis, differt. — Typus: *Ramachandran 66948* (CAL, iso MH), India, Kerala State, Cannanore District, Chandanathode, 825 m alt., 15-8-1980.

Pendulous epiphytes. *Leaves* articulate, up to 15 cm long, 0.5–1.5 cm broad, ensiform, acute, glabrous. Scape adnate to the upper leaf, up to 9 cm long, 0.3–0.6 cm broad, flattened. Spike up to 18 cm long. *Flowers* pedicelled, pale greenish yellow, in verticils of 3–6; verticils 2–3 mm apart. Bracts slightly longer than the ovary, c. 2 × 1.25 mm, lanceolate, acuminate, fringed along margin, gland-dotted. Sepals and petals deflexed, sparsely gland-dotted. *Sepals* c. 1.25 × 1 mm, ovate-oblong, obtuse. *Petals* c. 1.25 × 0.5 mm, linear, truncate and toothed at apex. Lip reniform in outline, 3-lobed, c. 1.5 mm long, c. 2 mm broad across the lateral lobes, pubescent, gland-dotted; lateral lobes auriform, longer than broad, folded upwards around the column; midlobe c. 0.5 mm long, c. 0.75 mm broad; 2-lobuled with a broad sinus in between; lobules of midlobe orbicular; disc ovate, concave; nerves not clear. *Column* c. 0.5 × 0.5 mm, oblong; stigma suborbicular. Ovary with pedicel c. 2 mm long. Pollinia ovoid.

Flowering. August.

Notes. *Oberonia chandrasekharanii* is allied to *O. sebastiana* Shetty & Vivek., an endemic species of Kerala (Bull. Bot. Surv. India 17, 1975, 157), but differs from it mainly by the reniform, pubescent lip with an ovate disc; the ear-shaped lateral lobes and the orbicular lobules of midlobe.

The specific epithet is to honour Dr. N. Chandrasekharan Nair, Joint Director, Botanical Survey of India, Coimbatore, in recognition of his valuable contributions to Indian Botany.

ACKNOWLEDGEMENT

The authors are grateful to Dr. Gunnar Seidenfaden, Borsholmgard, Denmark for examining the specimen and giving his valuable opinion and suggestions.

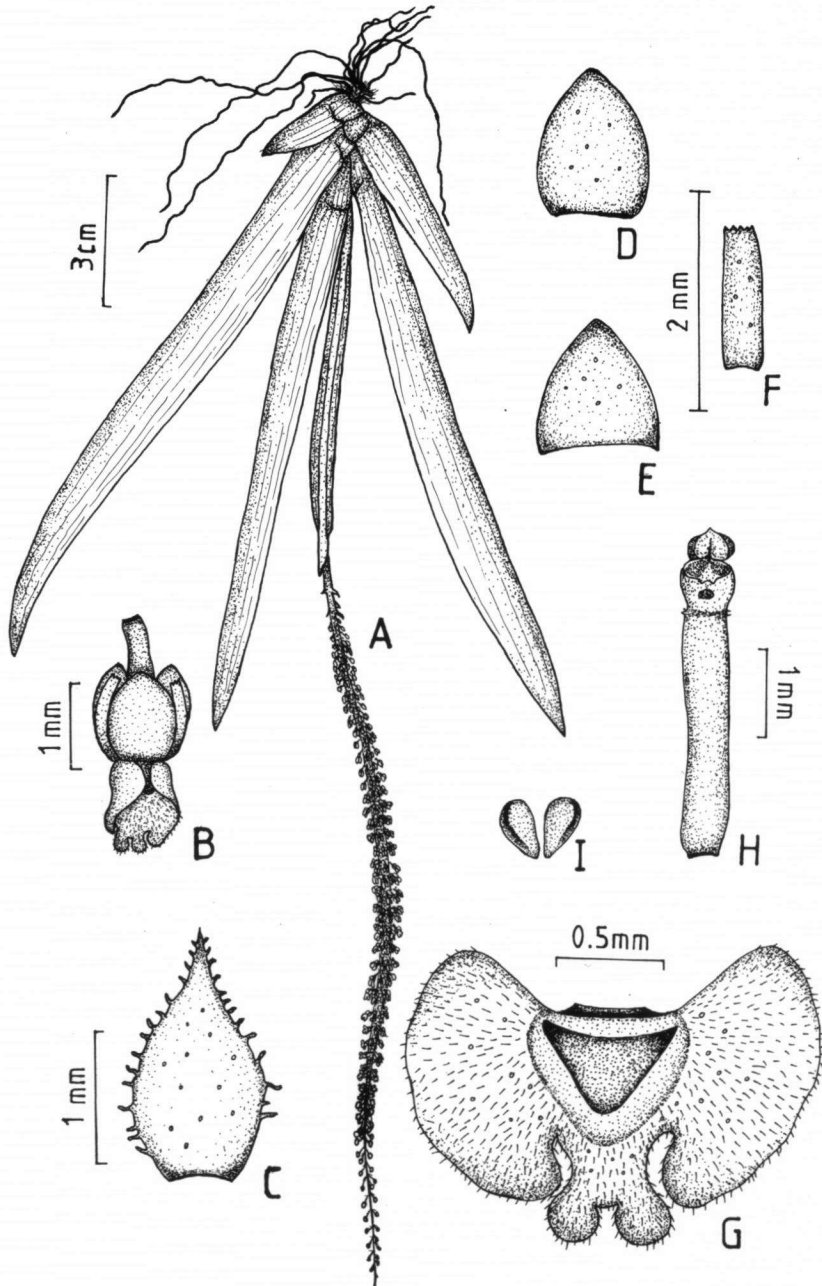


Fig. 1. *Oberonia chandrasekharanii*. — A. Habit; B. flower; C. bract; D. dorsal sepal; E. lateral sepal; F. petal; G. lip; H. column with ovary and pedicel; I. pollinia (not to scale).