

DESCRIPTION OF POLLEN GRAINS OF ONDINEA PURPUREA DEN HARTOG

J. MULLER

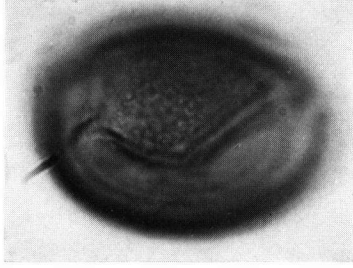
Pollen grains single, ellipsoidal to spherical-suboblate, operculate. Equatorial axis 33 (37.1) 41μ , polar axis 25 (25.7) 26μ . Encircling apertural furrow situated parallel to equator at $\pm \frac{2}{3}$ from proximal pole; operculum oval or spherical-subtriangular, diameter $\pm \frac{1}{2}$ of equatorial diameter; width furrow 2—3 μ . Total wall thickness 2 μ on proximal side, thinning to 1 μ near furrow, thickening to 1.5 μ on operculum; furrow membrane 0.5 μ thick. Endexine 0.5 μ thick; ektexine 1.5 μ thick proximally, 1 μ distally, probably absent from furrow membrane, massive, smooth or with faintly irregularly warty-verrucate surface. — Plate I.

Material: *Leutert 108*.

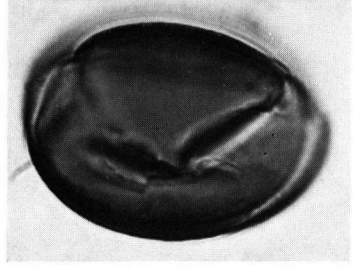
Comment: The pollen of this species is very similar to that found in *Nymphaea stellata* Willd. and *N. tetragona* Georgi (Erdtman, 1943), *N. zanzibariensis* Casp. (Erdtman, 1952), and in *N. amazonum* Mart. & Zucc., *N. gracilis* Zucc., and *N. mexicana* Zucc. (recorded as *Castalia amazonum*, *C. gracilis*, and *C. mexicana* respectively; Wodehouse, 1935).

REFERENCES

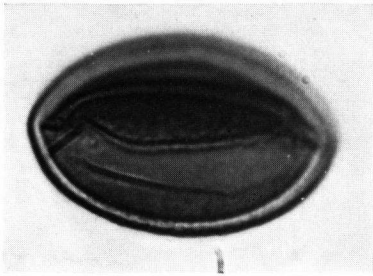
- ERDTMAN, G. 1943. An Introduction to Pollen Analysis. Waltham, Mass. p. 1—239.
 — 1952. Pollen Morphology and Plant Taxonomy. Angiosperms (An Introduction to Palynology. 1). Stockholm, p. 1—539.
 WODEHOUSE, R. P. 1935. Pollen Grains. Their structure, identification and significance in science and medicine. New York, p. 1—574.



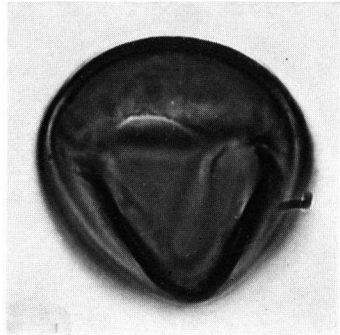
a



b



c



d

Plate 1. Pollen of *Ondinea purpurea* den Hartog. — a. equatorial view, upper focus; b. same grain, middle focus; c. equatorial view; d. polar view. (a—d. *W. Leutert 108*, type.)